

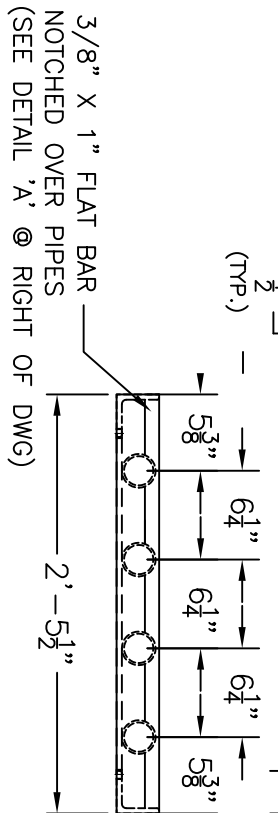
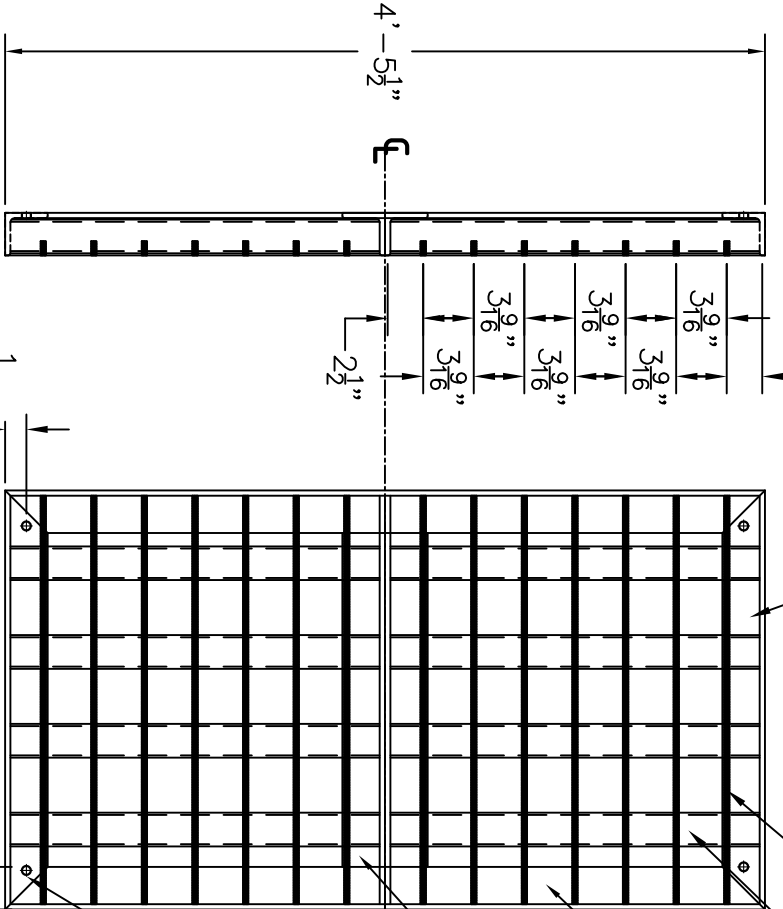
3" X 3" X 3/8" X 29 1/2" ANGLE
 (CUT @ 45 DEG. BOTH ENDS)
 2 PC. PER ASSY REQ'D

3/8" X 1" X 28 5/8" FLAT BAR
 (DET. 'A' SHOWN BELOW)
 14 PCS. PER ASSY REQ'D

2" SCH. 40 PIPE (6 1/4" C-C MAX.)
 8 PCS. REQ'D (BLACK PIPE)

3" X 3" X 3/8" X 53 1/2" ANGLE
 (CUT @ 45 DEG. BOTH ENDS)
 2 PC. PER ASSY REQ'D

3" X 3" X 3/8" X 28 3/4" ANGLE
 (WELDED BACK TO BACK)
 NOTCHED AS SHOWN BELOW
 2 PCS. PER ASSY REQ'D



NOTE:
 HOT DIP GALV. AFTER FABRICATION



DETAIL 'A'

